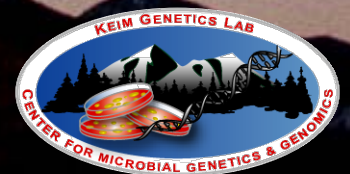


Annual Refresher Training: Keeping it Interesting

Dr. Amy Vogler

Center for Microbial Genetics and Genomics
Northern Arizona University



Many Programs Require Training

- Select Agent training
 - Biosafety
 - Incident Response
 - Security
 - Other
- Respiratory Protection
- Blood-borne pathogens
- Etc.



Select Agent Regulation Requirements

- 42 CFR Part 73:

“The Responsible Official must ensure a record of the training provided to each individual with access to select agents and toxins and each escorted individual (*e.g.*, laboratory workers, visitors, etc.) is maintained. The record must include the name of the individual, the date of the training, a description of the training provided, and the means used to verify that the employee understood the training.”



Complying AND Keeping it Interesting

- Traditional trainings frequently involves PowerPoint presentations and quizzes
 - Fulfills requirements
 - Often boring and not very interactive
- I wanted to explore options that would make required trainings an engaging experience rather than a dreaded one

JEOPARDY!®



JEOPARDY® Format

- Traditional JEOPARDY® game board format
 - Only one game board was used (i.e., no DOUBLE JEOPARDY® or FINAL JEOPARDY®)
 - No Daily Doubles
- 2 teams
- First to raise hand picked to answer
- Typical JEOPARDY® point values for increasing difficulty
- Points added for correct responses and subtracted for incorrect responses



JEOPARDY® Trainings

- Required annual Select Agent refresher training at Center for Microbial Genetics and Genomics at NAU for 2011
 - 9 categories with 10 “answers” each
 - 31 participants
 - 9 survey respondents (29% response rate*)
 - *This survey was given retroactively and was voluntary, which likely negatively affected the response rate
- Demonstration presentation at Arizona Tri-University Meeting in 2011
 - 6 categories with 10 “answers” each
 - 44 participants
 - 30 survey respondents (68% response rate)



Example

Biosafety Acronyms

200

ABSA

What is the American Biological
Safety Association?



OSHA Lab
Standard

Biosafety

Fire Life
Safety

DOT Hazard
Classes

Respiratory
Protection

Regulatory
Agencies

200

200

200

200

200

200

400

400

400

400

400

400

600

600

600

600

600

600

800

800

800

800

800

800

1000

1000

1000

1000

1000

1000

1200

1200

1200

1200

1200

1200

1400

1400

1400

1400

1400

1400

1600

1600

1600

1600

1600

1600

1800

1800

1800

1800

1800

1800

2000

2000

2000

2000

2000

2000

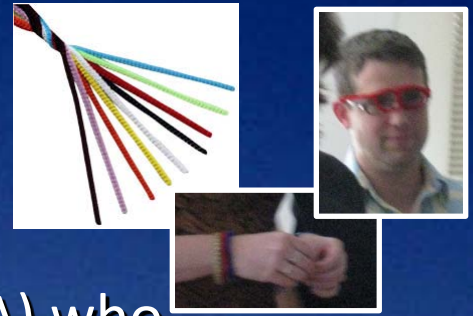
Potential Issues with JEOPARDY®

- Moves very fast
 - Limits opportunity for discussion
- Traditional play encourages a few very active and knowledgeable participants
 - Don't get universal participation
- How to create a record satisfying the “means used to verify that the employee understood the training” requirement of 42 CFR Part 73



Bluff

- 2 teams that take turns picking questions
- Everyone in the team who's turn it is (team A) who "knows" the answer should stand up
- Other team (team B) picks the person on team A who gets to answer the question
- If team A answers correctly they get a point for every person standing up
- If team A answers incorrectly, anyone without a token (see below) on team B can answer and if correct, team B gets a point for every person standing up in team A
- Everyone who's correctly answered a question gets a token
- You can only choose someone who doesn't have a token until everyone on a team has a token, then you can only pick someone who has one token, etc.

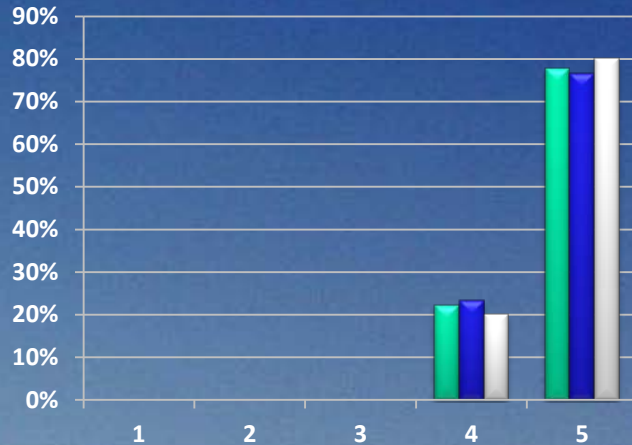


Bluff Training

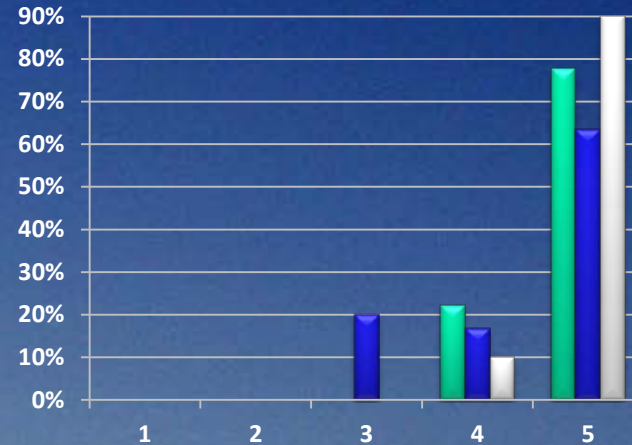
- Required annual Select Agent refresher training at Center for Microbial Genetics and Genomics at NAU for 2012
 - 9 categories with 10 questions each
 - 20 participants
 - 20 survey respondents (100% response rate)



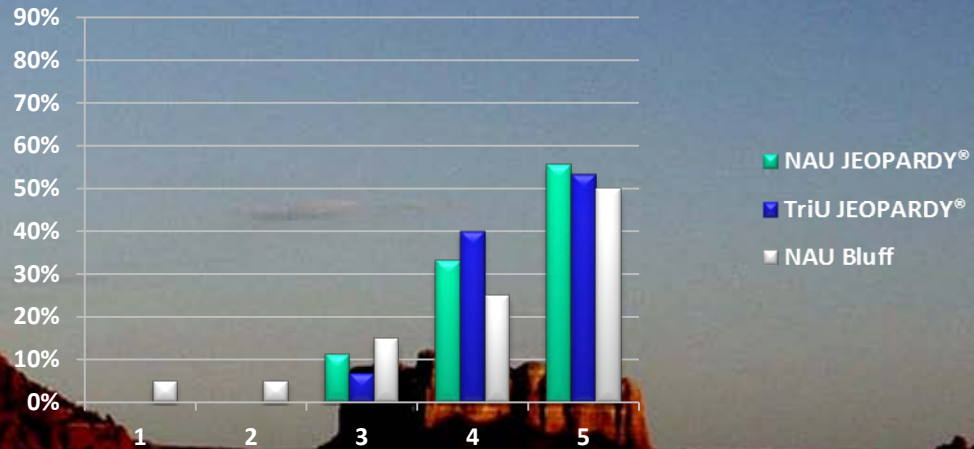
Survey Results



Engagement

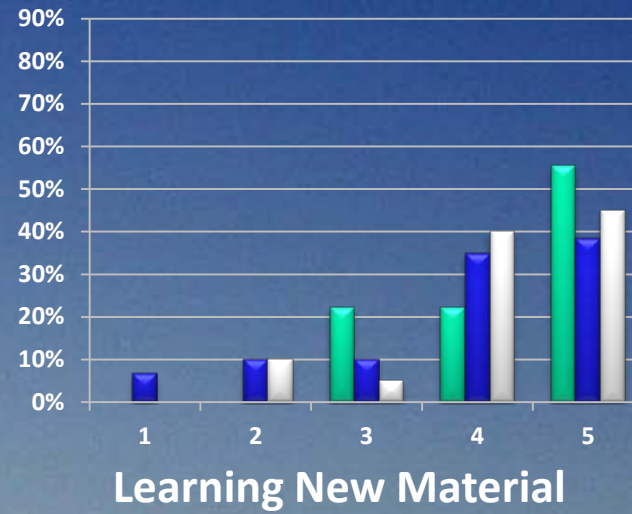
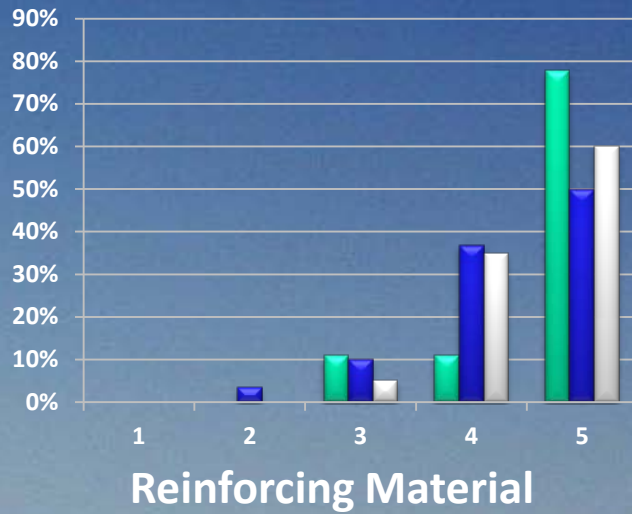


Encouraging Participation



Generating Discussion

Survey Results



- NAU JEOPARDY®
- TriU JEOPARDY®
- NAU Bluff