

Zombies, MAD SCIENTISTS & Superheroes

An Approach to Promoting Safety Culture with Research Lab Personnel

University of Kentucky Department of Biological Safety

Brandy Nelson, Biosafety Officer, Responsible Official

Holley Trucks, Assistant Biosafety Officer, Alternate Responsible Official

Eric Rouse, Senior Biological Safety Specialist

Delena Mazzetti, Senior Biological Safety Specialist

Objectives

- Engage the research community, mainly at the staff level, in a positive interaction with Environmental Health & Safety Division.
- Promote a culture of safety in an informal, non-punitive setting.
- Provide an in-person training opportunity to supplement existing required online training program.

Methods

- Organized a Lab Safety Fair with all EH&S divisions participating.
- Included interactive learning activities, prizes, educational displays, food and fun.
- Provided prizes for participants who completed all learning activities to encourage engagement with EH&S staff.
- Utilized fun themes to capture attention and effectively market the activity.

EH&S Division Participation

- All departments within EH&S participated
 - Biological Safety – 4 employees
 - Environmental Management – 9 employees
 - Fire Marshal – 4 employees
 - Occupational Health and Safety – 6 employees
 - Radiation Safety – 10 employees
 - Administration – 4 employees
- This unified approach allowed participants to understand all the areas we cover and exactly who can help them with what

Interactive Learning Activities

- Providing interactive learning activities that reinforce basic safety principles is the real point of this type of activity.
- Interactive learning activities:
 - Are impactful for learners
 - Are memorable
 - Establish a positive relationship between EH&S staff and their clients

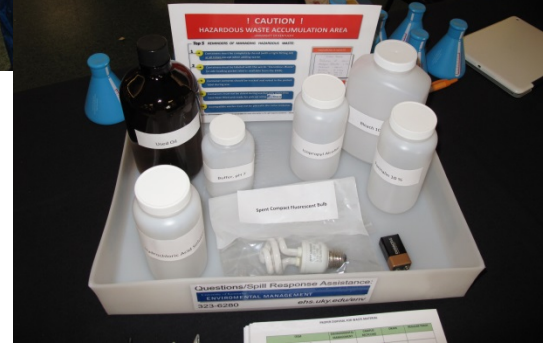
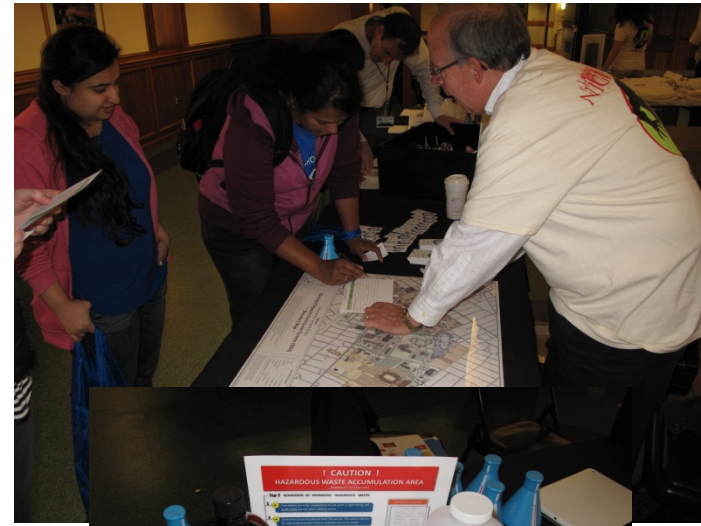
Biosafety



Radiation Safety



Environmental Management



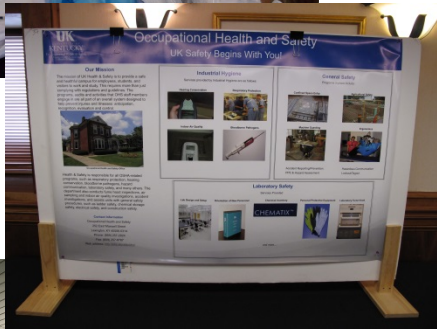
Occupational Health & Safety



Fire Marshal



Posters



Welcome Desk



Prizes

- Small prizes are given at each department's interactive activity
- After completion of all activities participants receive t-shirts and food tickets
- Prizes attract participants and provide an incentive to fully participate in the interactive learning activities

Prizes



TO RECEIVE YOUR OWN LAB SAFETY FAIR T-SHIRT AND/OR DOOR PRIZES, FOLLOW THE INSTRUCTIONS BELOW.



Welcome to the UK Lab Safety Fair!

To enter the prize drawing, please take this card to each of the following demonstration tables. When completed, return the card to the welcome table.

Biological Safety	Radiation Safety	Occupational Health & Safety	Environmental Management	Fire Marshal
<input type="checkbox"/>	<input type="checkbox"/>	<input type="checkbox"/>	<input type="checkbox"/>	<input type="checkbox"/>

1. TAKE YOUR CARD TO EACH OF DEMONSTRATION TABLES FOR VALIDATION BY EH&S STAFF
2. FILL IN THE INFORMATION REQUESTED ON THE BACK OF THE CARD.
3. RETURN THE COMPLETED CARD TO THE WELCOME TABLE

Themes

- Marketing is critical to the success of this type of event
 - Electronic means – website, newsletters, list-servs
 - Handbills, posters and flyers on campus
 - “Save the Date” pens
- Fun themes capture the attention of the target audience and unify the message of the event
- Utilizing t-shirts that are themed in a way that make them a desirable item gives great safety publicity throughout the year

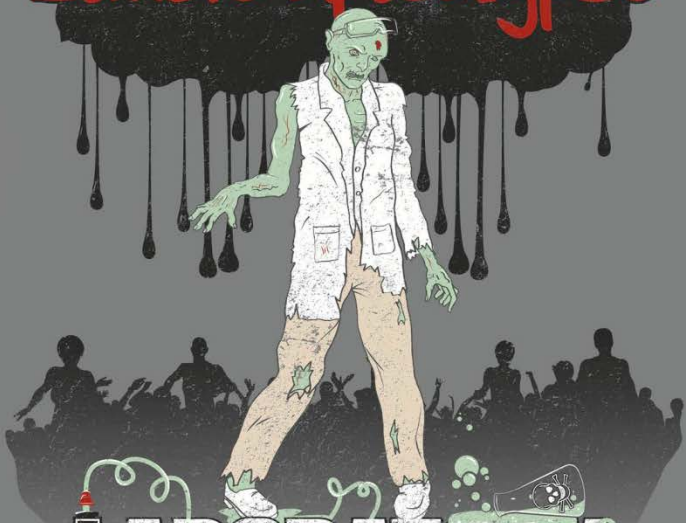
FUN! FOOD! PRIZES!

COME DRESSED AS A ZOMBIE AT 1:00PM!

BEST ZOMBIE WINS GRAND PRIZE! JUDGING TAKES PLACE AT 1:15PM!

CONTACT EHSBIO SAFETY@UKY.EDU FOR MORE DETAILS

help prevent the
zombie apocalypse



**LABORATORY
SAFETY**

Fair

**WED OCTOBER 9
10AM-2PM
2ND FLOOR BBSRB
ATRIUM**

SPONSORED BY UK DIVISION OF ENVIRONMENTAL HEALTH AND SAFETY

2013 Theme

Help Prevent the Zombie Apocalypse



UK
UNIVERSITY OF
KENTUCKY®
see blue.

LABORATORY SAFETY
~~NIGHTMARE~~
FAIR
FUN!
FOOD!
PRIZES!

WEDNESDAY, OCTOBER 29
10AM - 2PM
COMBS RESEARCH BUILDING ATRIUM

SPONSORED BY UK DIVISION OF ENVIRONMENTAL HEALTH & SAFETY

2014 Theme Lab Safety Nightmare



**BE A LAB SAFETY
HERO!***



No superpowers required

UK
UNIVERSITY OF
KENTUCKY

Environmental Health & Safety

LAB SAFETY FAIR
2015

October 28

10 am to 2 pm

Mining & Minerals Research

Building



UK UNIVERSITY OF KENTUCKY
Environmental Management



UK UNIVERSITY OF KENTUCKY
DEPARTMENT OF BIOLOGICAL SAFETY

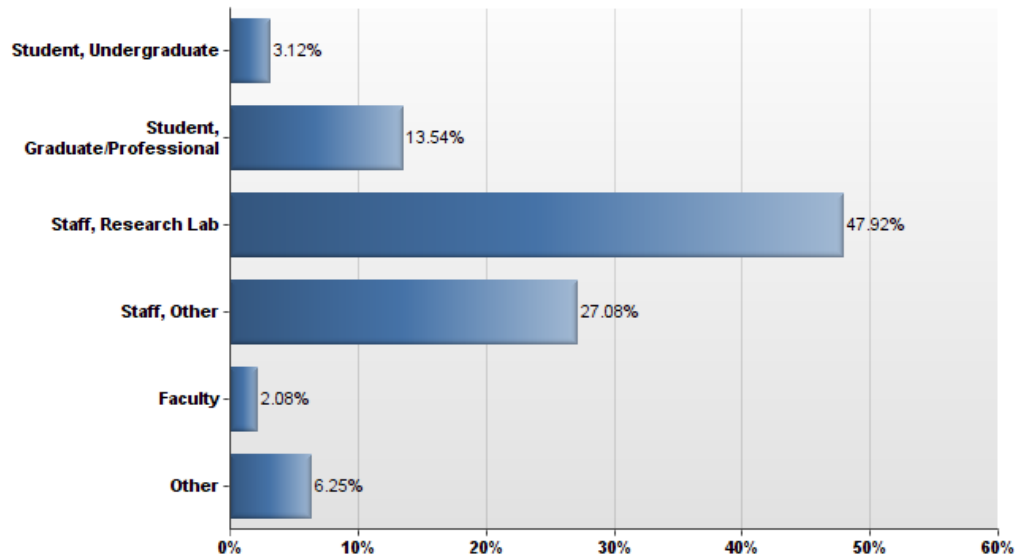
UK UNIVERSITY OF KENTUCKY
OCCUPATIONAL HEALTH & SAFETY

2014 Survey Results

- 275 attendees completed all activities
- 35% completed after event survey
- Allow us to measure effectiveness of activities, target audience reached and achievement of division goals

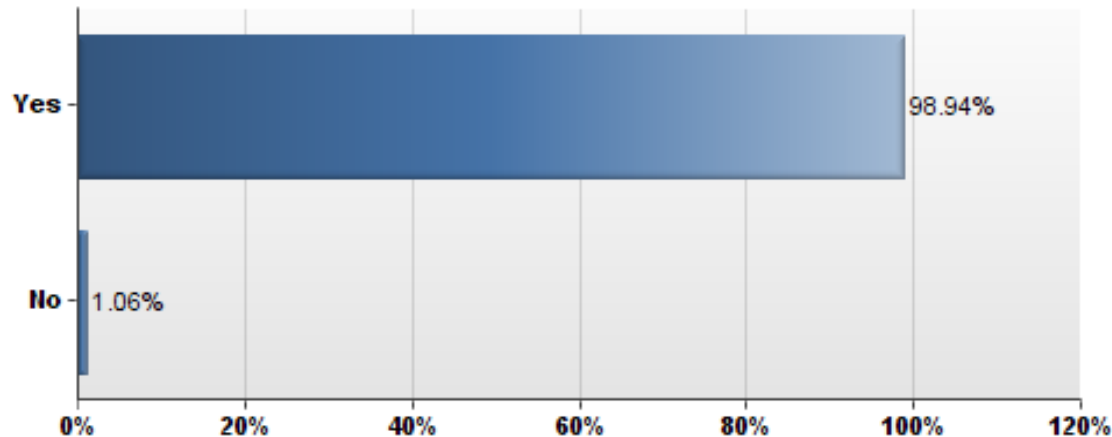
2014 Survey Results

Which of the following choices best describes your current status at UK?



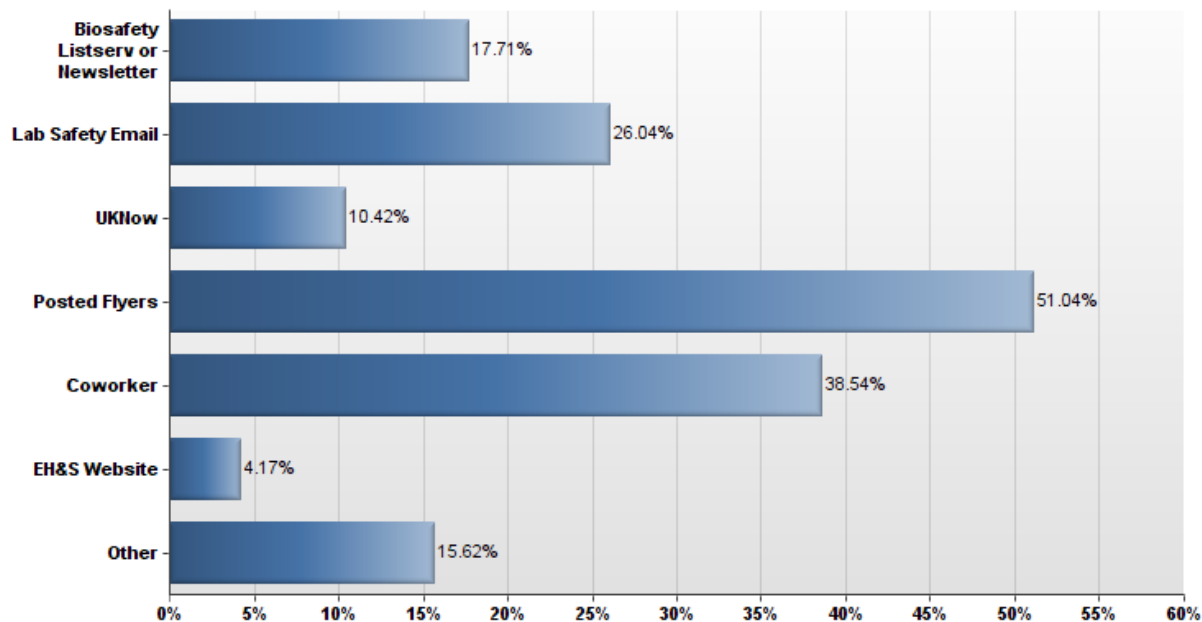
2014 Survey Results

Do you feel you have a clearer understanding of the role of each department within the EH&S division?



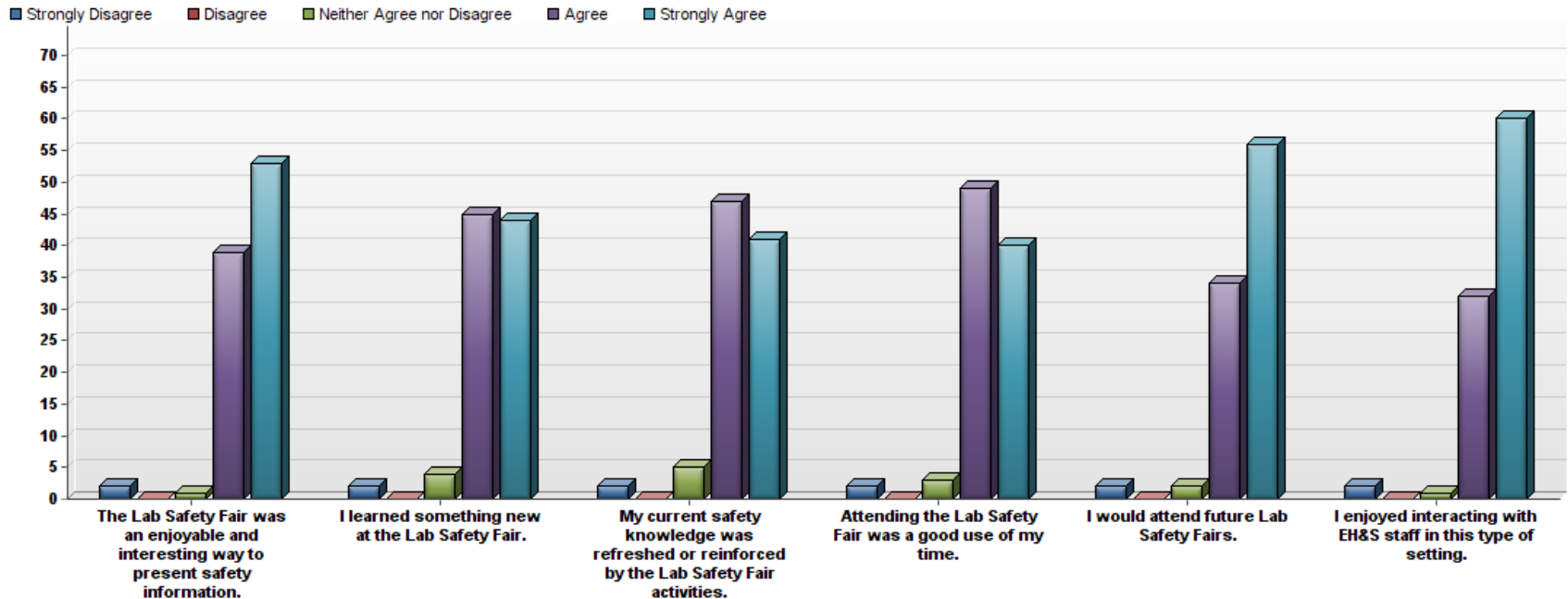
2014 Survey Results

How did you find out about the Lab Safety Fair?



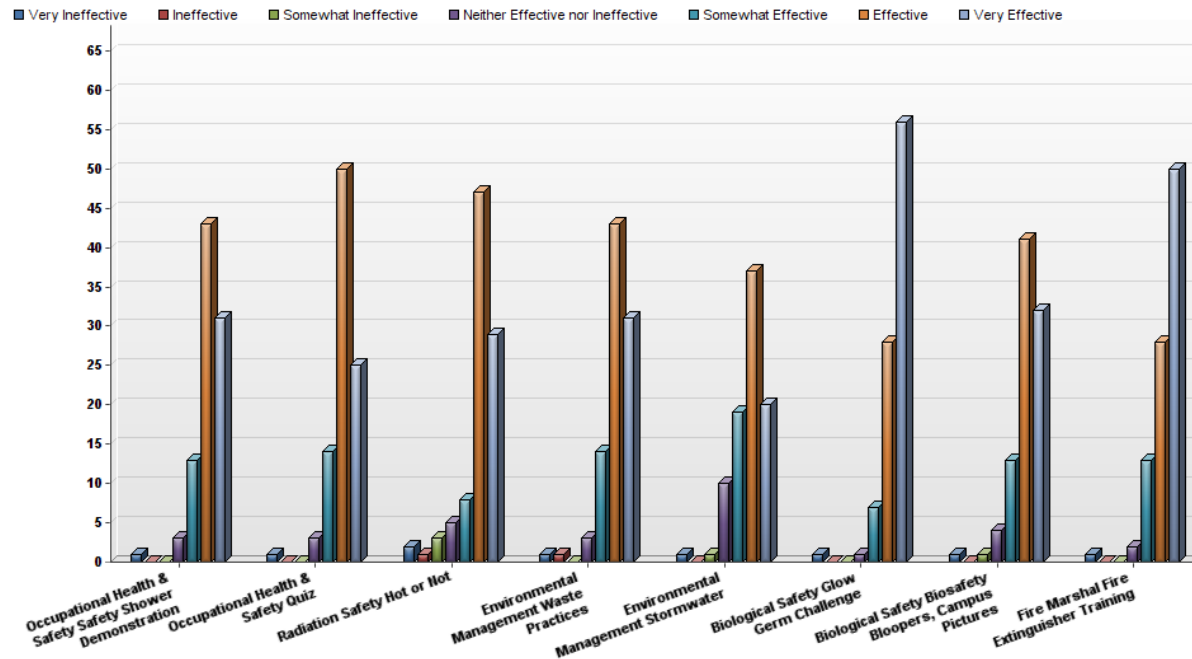
2014 Survey Results

Please indicate your agreement with the following statements. Effectiveness for target audience.



2014 Survey Results

Please rate the effectiveness of the interactive learning activities.



Results

- We have attracted large crowds and had an overwhelming representation from research lab staff, our target audience.
- Our after fair survey provided a great snapshot of our ability to achieve our goals.
- The community served by EH&S was very pleased to interact with EH&S staff in a more informal, fun environment.
- Research lab personnel that they greatly appreciated this activity.

Tips for Successful Results

- Support from division leadership and beyond is critical to procure funding, support and full EH&S staff participation for this type of event.
- Planning is critical. Our planning team begins meeting regularly approximately 6 months prior to the event.
- Creativity makes an event memorable.
- Funding makes it possible.
 - (No \$\$?, Add more creativity)

Conclusion

- Lab Safety Fair has been a great success and, with the support of upper administration, has become an annual activity with rotating locations to really capture the entire research lab community.
- This type of informal activity seems invaluable to providing a personal contact and positive impression for a community that requires a lot of EH&S support.

Outcomes

- We engaged the research lab community and refreshed their training on core EH&S topics.
- We provided a better understanding of the types of support and services that the different departments within EH&S can provide.

Brandy J. Nelson, MS, SM(NRCM), CBSP
Biological Safety Officer, Responsible Official
Institutional Contact for Dual Use Research



Department of Biological Safety

505 Oldham Court

Lexington, KY 40502-0473

Office: (859) 257-1049

Cell: (859) 550-0333

Fax: (859) 323-3838

Email: brandy.nelson@uky.edu

Website: <http://ehs.uky.edu/biosafety/>