



University of Pittsburgh

# Strategies for Implementing a Comprehensive Occupational Health Program

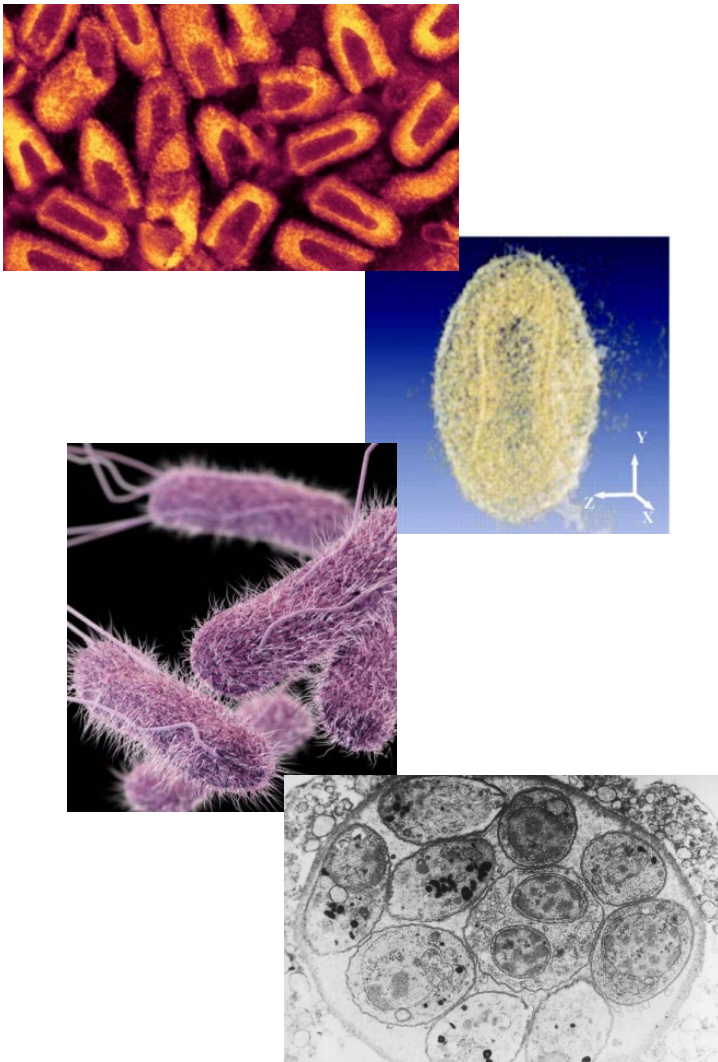
University of Pittsburgh  
Department of Environmental Health & Safety

Molly S. Stitt-Fischer, PhD, CPH, CBSP, SM(NRCM)

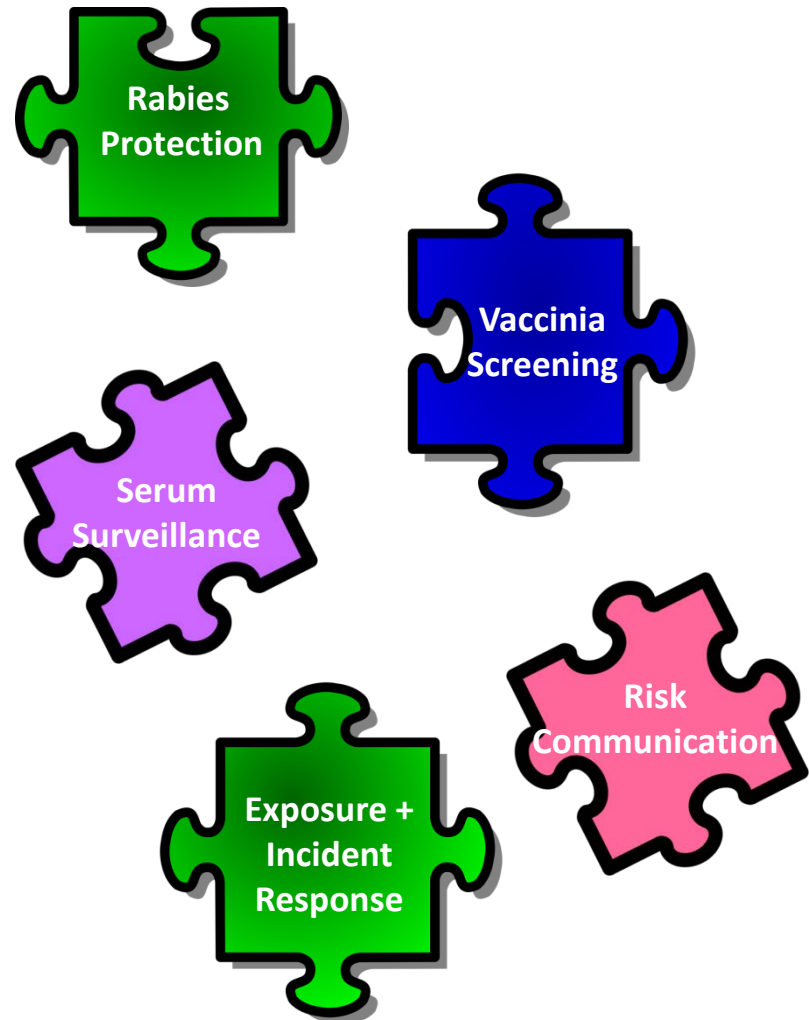




## Research Activities:



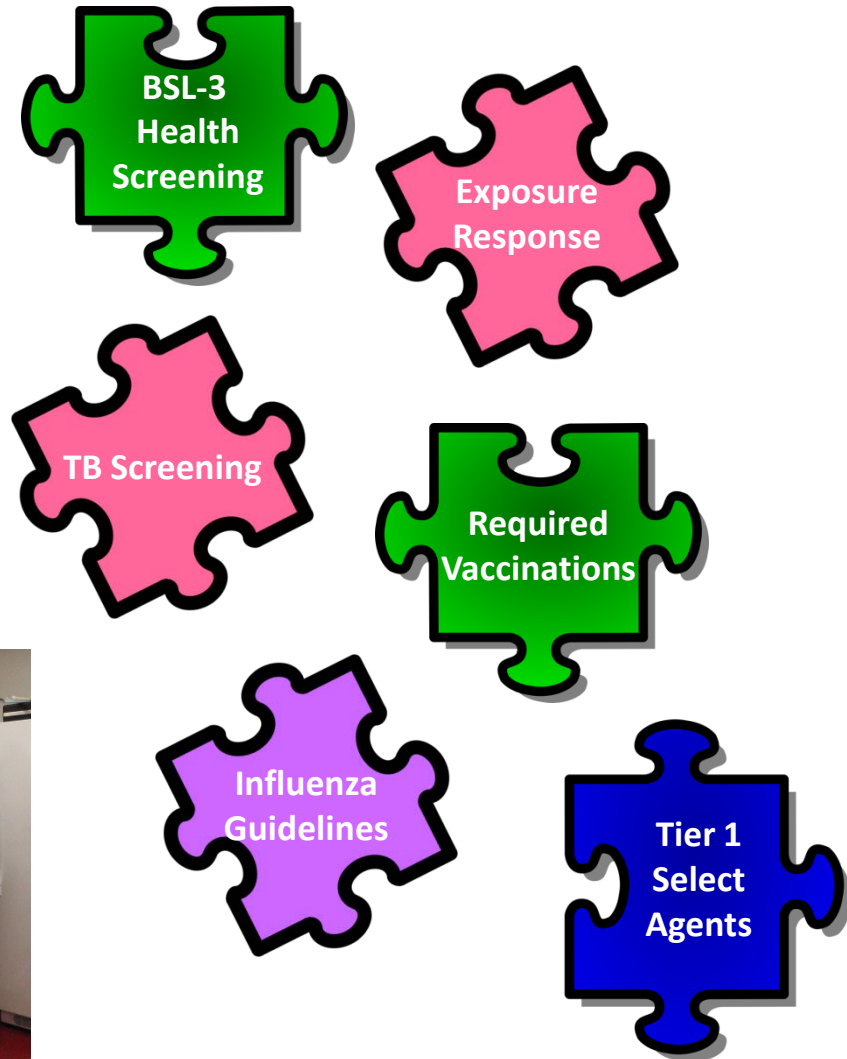
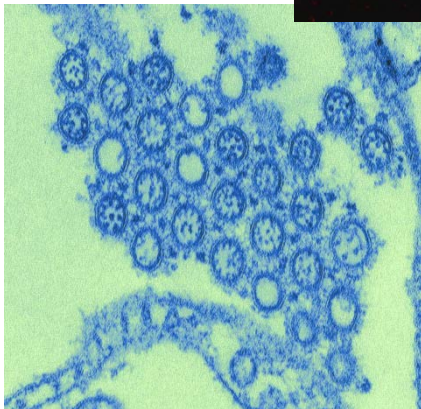
## Program Elements:





## Research Activities:

## Program Elements:

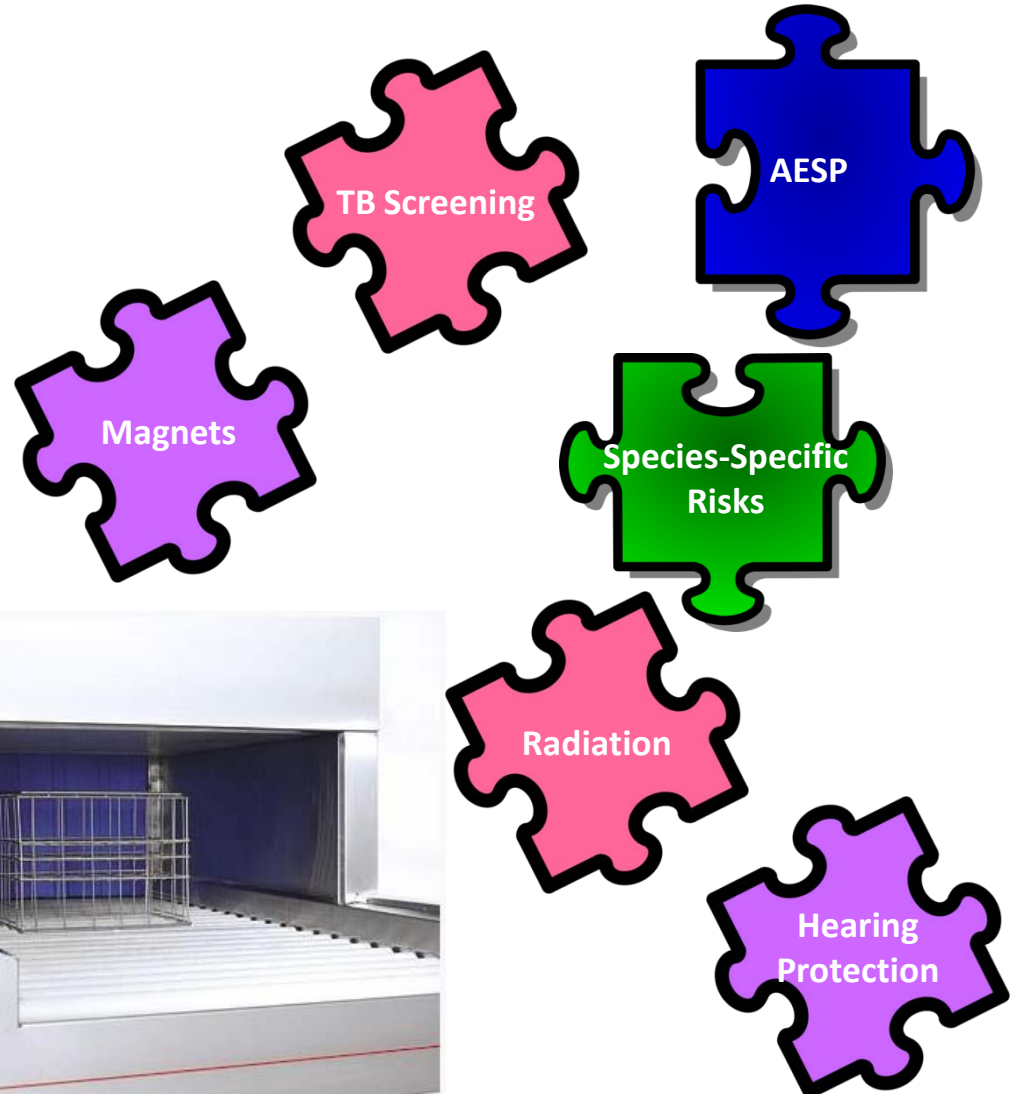




## Research Activities:

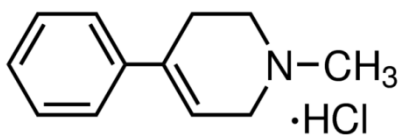


## Program Elements:

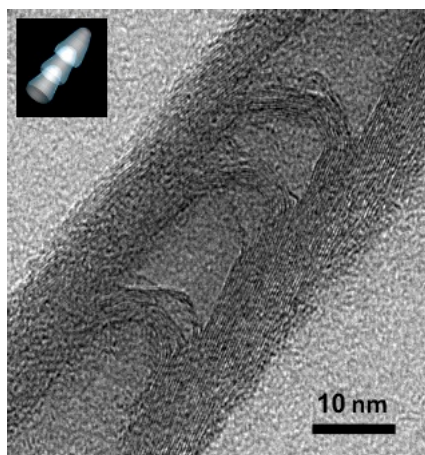
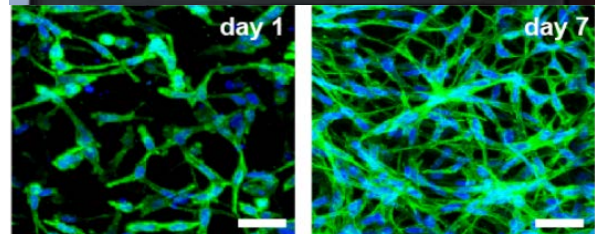
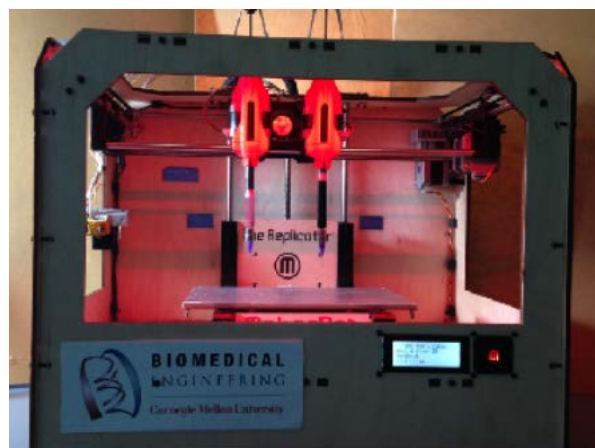




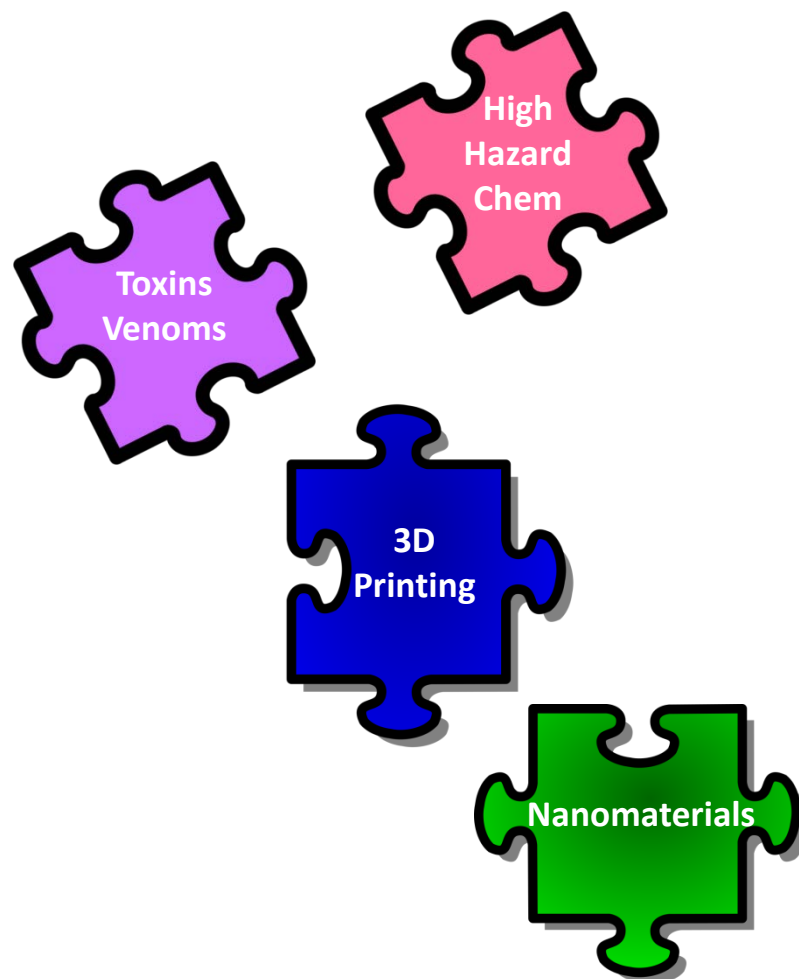
## Research Activities:



MPTP

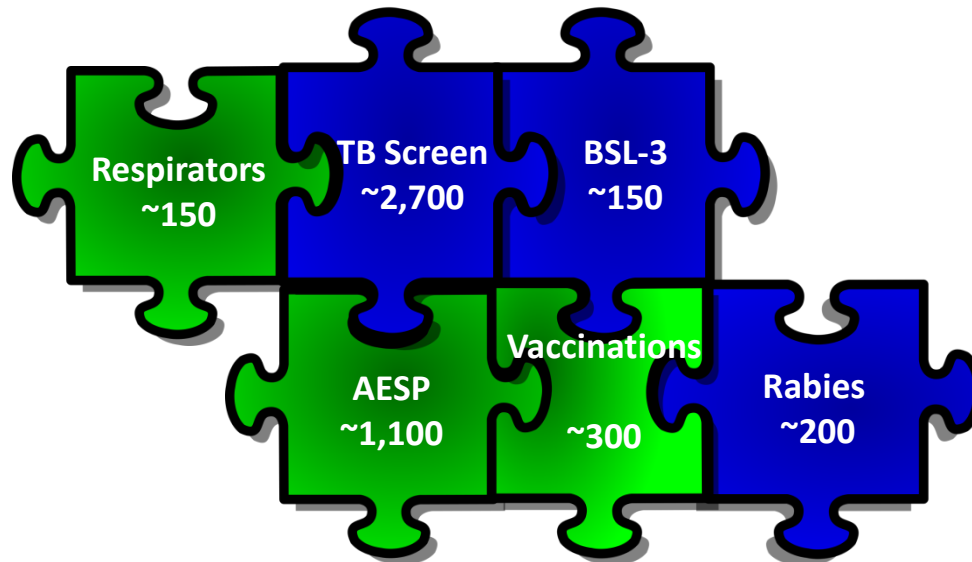


## Program Elements:





# A Partial Snapshot of Occupational Health Programs at Pitt



Minimum of 4,600 encounters annually



# How Do We Successfully Support Our Personnel?



Do your teams know each other?



Do your teams communicate regularly?



# How Do We Successfully Support Our Personnel?

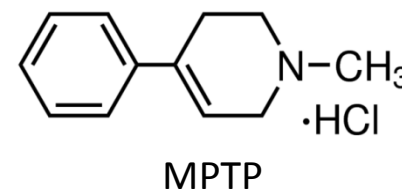






# Communication: Combine Team Resources

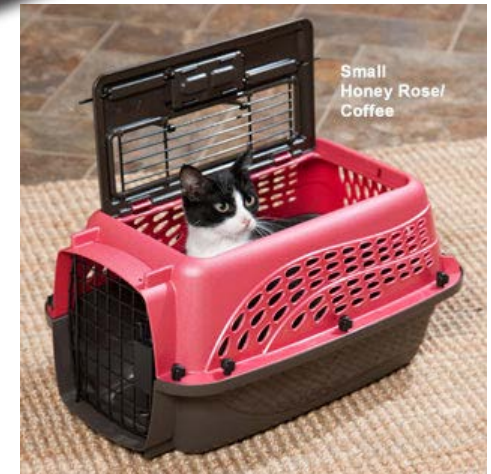
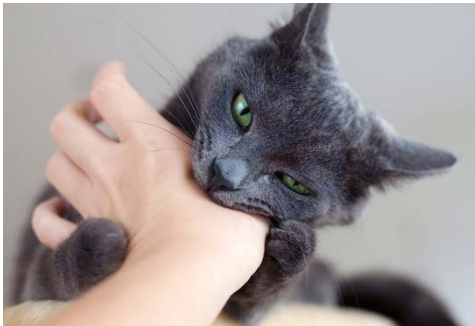
- Biosafety team: proactively provide information on new research hazards
  - Are we prepared to start work with this hazard?
  - Do we need specialized training, PEP, or other resources?





# Communication: Combine Team Resources

- Occupational health team passes along personnel concerns
  - Clusters of similar injuries or complaints



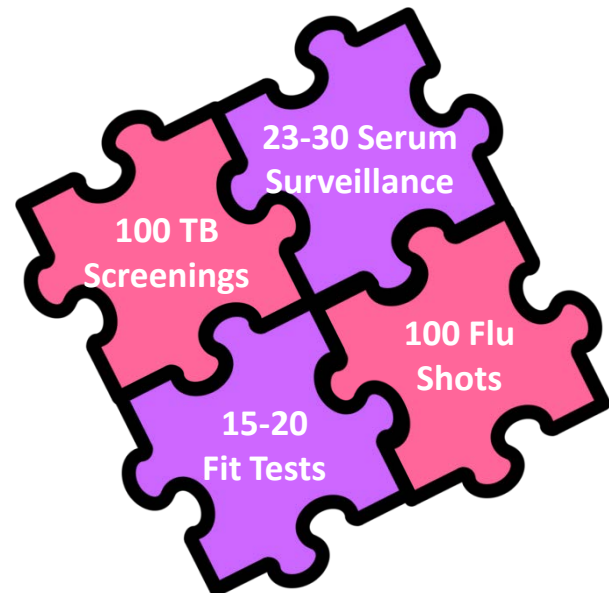
- Employees trust Employee Health Services and EH&S to maintain their anonymity



# Customer Service: Let's Take This Show on the Road

- Onsite Visits for Specific Departments
  - Efficient
  - Provides a face to go with a name
  - Identify areas of weakness in training and hazard communication
  - Improve incident reporting

**1.5 Hours x 2 Days**





# Respect for Areas of Expertise

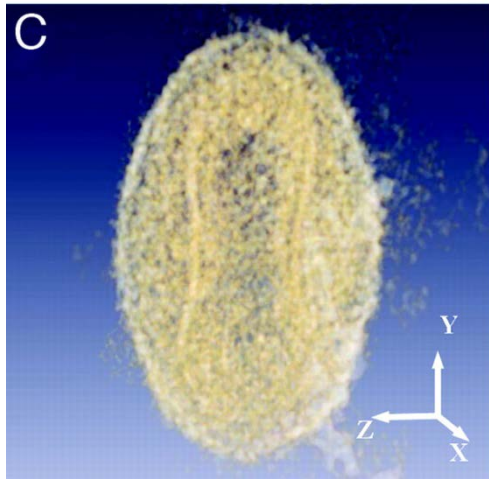


- Identify and mitigate research hazards

- Evaluate health issues that impact an individual's ability to perform specific tasks safely

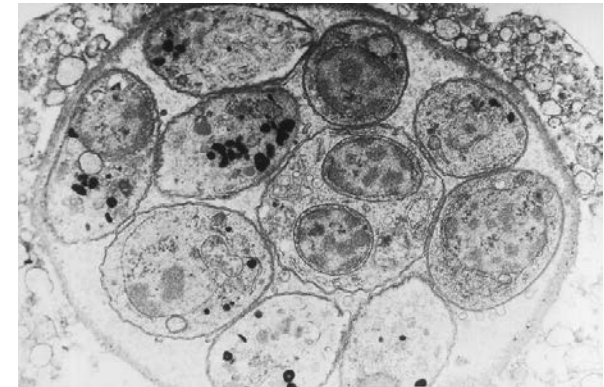
# Respect for Areas of Expertise

## Viral Vectors: Vaccinia virus



- Biosafety team:
  - Replication competent?
  - Genetically modified?
- Occupational health team:
  - Recommend vaccination?
  - Other accommodation?

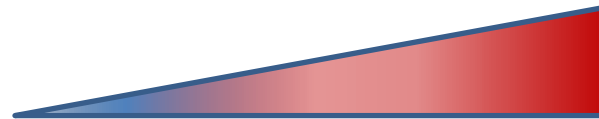
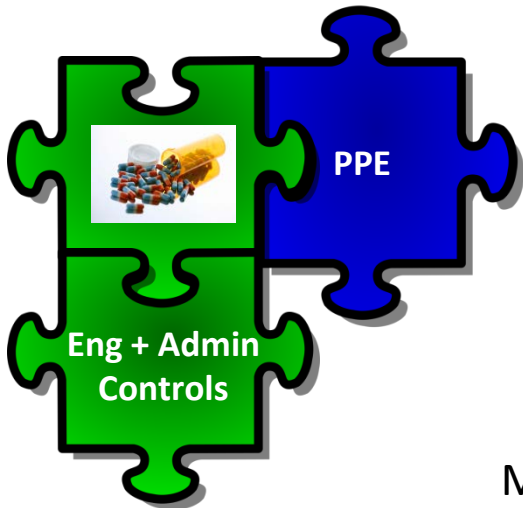
## Populations with Increased Risk: Toxoplasma gondii



- Biosafety team:
  - Enhanced engineering and/or administrative controls or change in work practices?
- Occupational health team:
  - Consult with personal MD?



# Teamwork: Accommodations



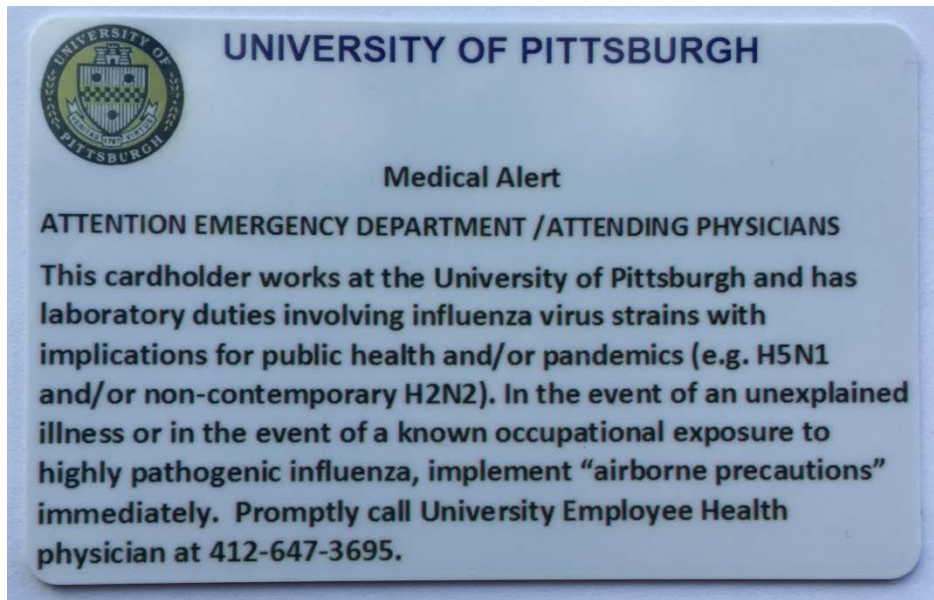
Mild Symptoms

Anaphalaxis





# Teamwork: Resources



## MEMO

To: Emergency Department Personnel  
From: Jay D. Harper, MD, MPH  
Medical Director, Employee Health Services  
Subject: EMPLOYEE INJURY ASSOCIATED WITH A NON-HUMAN PRIMATE  
Date: January 1, 2014

**This individual has had an occupational exposure to a non-human primate.** Non-human primates are known carriers of herpes virus simiae (B virus) that can cause lethal infection in humans exposed to any body fluid of a non-human primate, including saliva, blood, urine, and feces (even if NOT bloody). Non-human primates may also be infected with simian immunodeficiency virus (SIV). Postexposure treatment must be considered.

Please **immediately** perform the following:

1. Contact Jay Harper, MD, MPH, at 412-647-3695 (Employee Health Services 24-hour number) to discuss Valtrex (one gram TID) for Herpes B virus exposure and/or Truvada (one tablet daily) for SIV exposure.
2. Obtain a viral culture and store at -20°C or colder.
3. Instruct employee to report to Employee Health Services on the next business day for follow up.

University of Pittsburgh  
Employee Health Services  
3708 Fifth Avenue, Suite 500.59  
Pittsburgh, PA 15213

Contact: Jay Harper, MD, MPH.

office phone: 412-647-5323;  
24-hour phone: 412-647-3695



# Leverage Team Expertise

- Employees instructed to follow up with Occupational health team after a visit to the ER
  - Personnel feedback on ER experience
  - Monitor ER's adherence to pre-planned response procedures
  - Occupational health team → liaison with the Director and Attending MD in the ER





# Leverage Communication and Expertise

- Personnel trained to report incidents to Biosafety team when possible
  - High risk areas
- Occupational health team summarizes significant incidents/exposures for Biosafety team
  - Advantage for investigation, follow-up, and reporting



# Implementing Pitt's Program

- Occupational health team: members of University Biohazards Committee
- Biosafety team: occupational health information incorporated into:
  - risk assessments,
  - biosafety manuals, and
  - annual laboratory safety surveys



# Implementing Pitt's Program

- Occupational health team: maintains all personal medical information
  - Biosafety team: complete/incomplete notification with date
- Occupational health program requirements incorporated into research approval and facility access



# How Do We Successfully Support Our Personnel?





# Pitt's Team

## **Occupational Health:**

Jay Harper, MD, MPH

Yolanda Lang, CRNP, DrPH

Kevin Woodward, RN



## **Biosafety:**

Jay Frerotte, MBA

Kathryn Board, MS

Rebecca Lingenfelter, MPH

