

NEW HAZARDOUS WASTE TRANSPORTATION REGULATIONS AT LMA LABORATORY NETWORK IN GEORGIA

Anna Kekelidze

Laboratory of the Ministry of Agriculture, Tbilisi, Georgia.

INTRODUCTION

Laboratory of the Ministry of Agriculture (LMA) is subject to Ministry of Environmental Protection and Agriculture of Georgia and is a diagnostic laboratory that works on different animal infectious diseases including Especially Dangerous Pathogens. Laboratory network consists of 11 BSL2 laboratories: 3 Zonal Diagnostic Laboratories (ZDLs) and 8 Laboratory Support Stations (LSSs). Laboratory is staffed with trained personnel to handle Risk Group 2/3 agents. LMA receives a large number of samples for tests, in the period of 2016-2018 992250 *Brucellosis* and 452 *Anthrax* specimens were tested. Therefore, efficient waste management becomes essential. In 2018 Government of Georgia has introduced new regulations that require strict control and registration of hazardous waste management that applies to the laboratories as well.



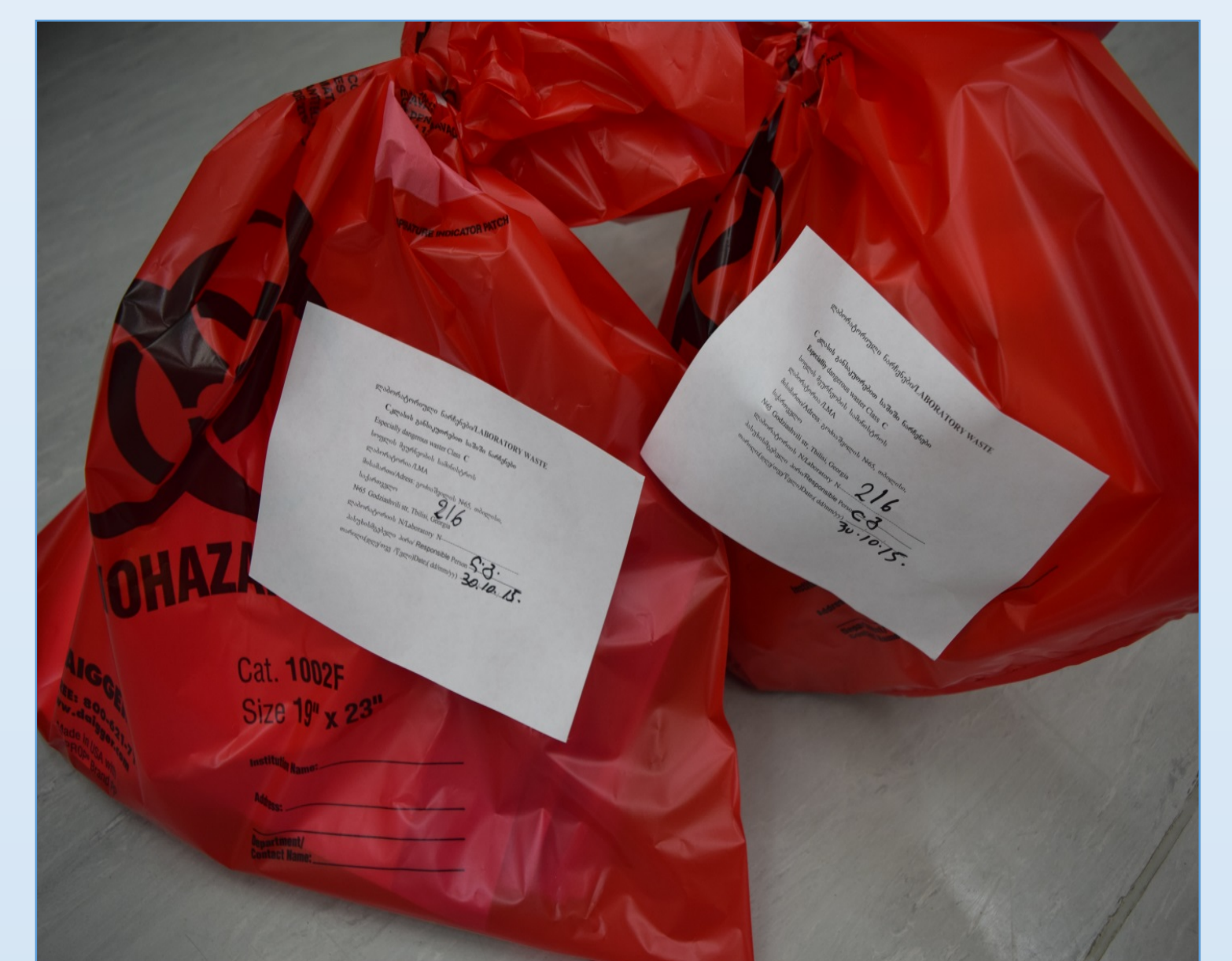
Biosafety trainings and workshops

METHODS:

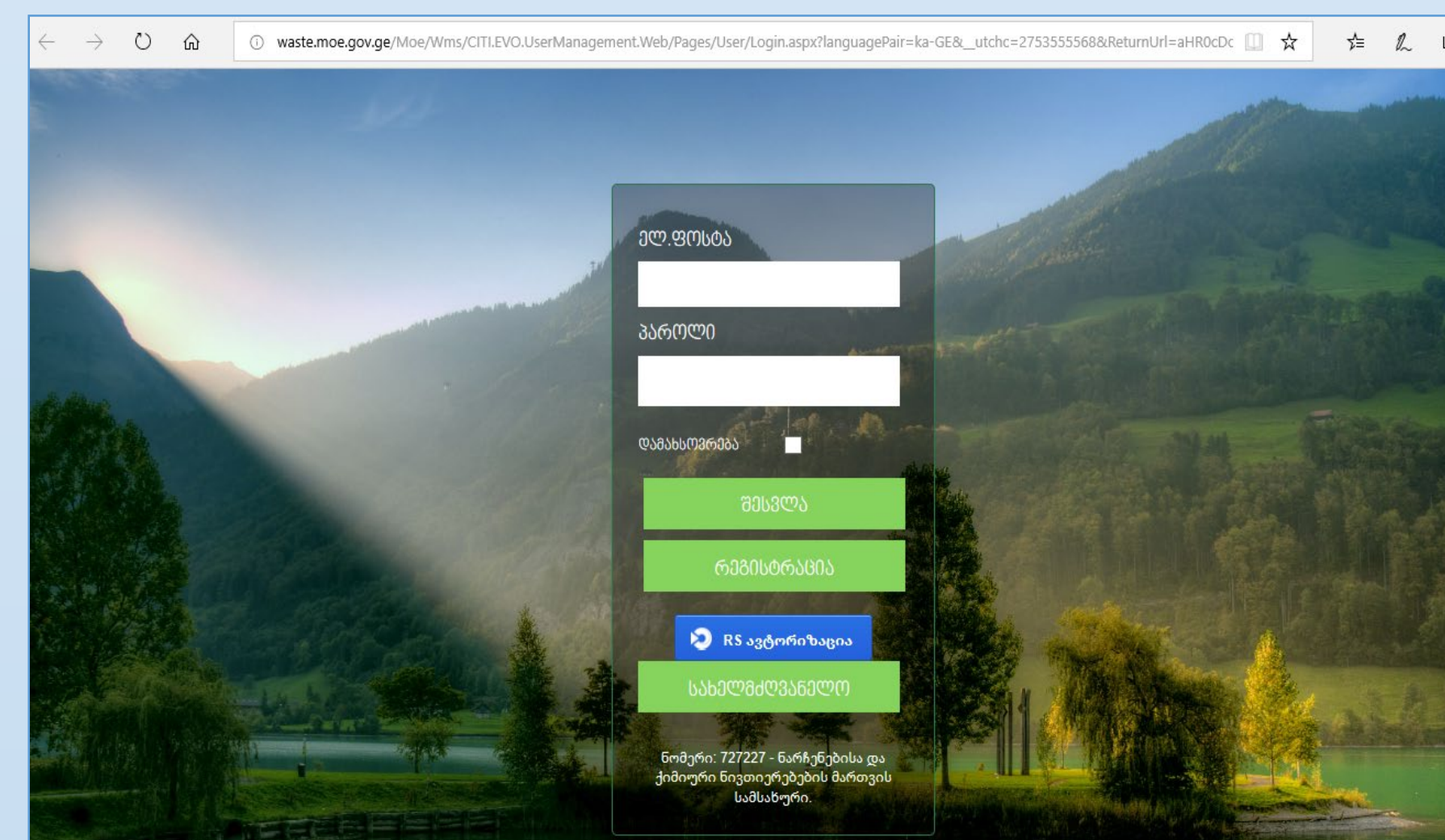
In 2018 a law related to registration of waste management activity, has been taken in to effect. The Department of Waste and Chemical Substances Management of Ministry of Environmental Protection and Agriculture of Georgia implemented new web portal (waste.moe.gov.ge) that supports to assign a unique code for each case, also simplifies the identification of the location where the hazardous waste is necessary to be transported. The monitoring system has been improved, now the following data is recorded in the portal: vehicle number, driver ID, hazardous waste physical characteristics, features, class, chemical composition and weight. Working plan was drafted based on a risk assessment legislation and reviewed by the LMA Biosafety Committee. Relevant chapters of the biosafety manual, biosafety SOPs, labels/postings/signs and other waste related documents were modified.

RESULTS

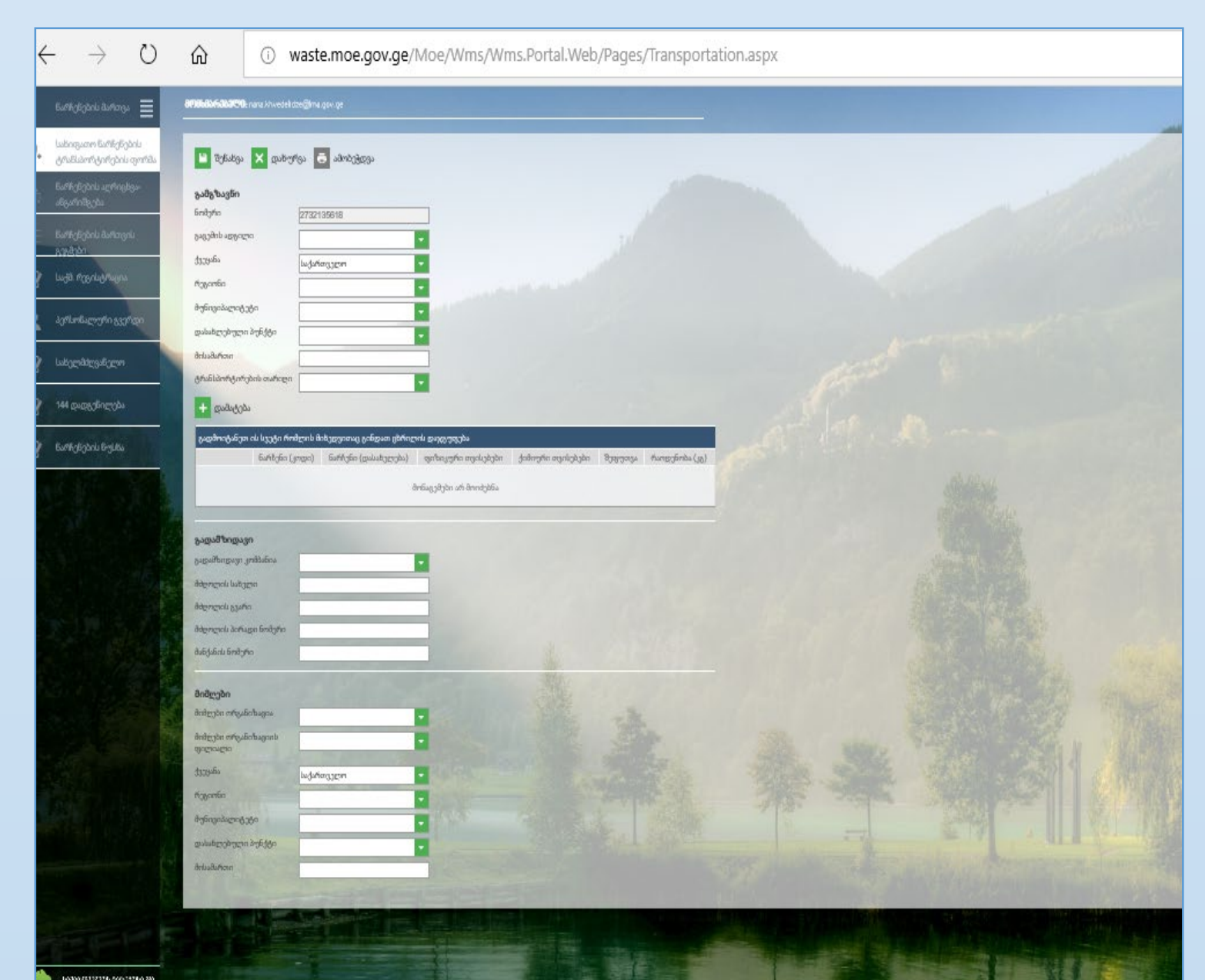
All laboratory staff had refresh trainings in biosafety. Due to new regulation training in biosafety for specialists included topics of hazardous waste transportation. The hazardous waste is being weighed before transportation. In 2016-2017 approximately 9 tones of hazardous waste was transported from LSSs to Tbilisi and Kutaisi ZDLs. From October-January of 2018 more than 400 KG hazardous waste was transported. Special vehicles were equipped with GPS system and ADR (European Agreement concerning the International Carriage of Dangerous Goods by Road) regulations



Veterinary Laboratory Department, working process



Web portal waste.moe.gov.ge



Hazardous waste transportation form (Annex II)



The photo of special vehicle used for hazardous waste transportation

CONCLUSION:

From September 2018, LMA has successfully registered as hazardous waste transportation organization. The entity is listed on waste.moe.gov.ge, which is monitored by a Biosafety Officer and Environment Protection Manager as an internal control. In addition, external control is conducted by Department of Waste and Chemical Substances Management and Environment Protection Department of Ministry of Environmental Protection and Agriculture of Georgia. All procedures that fall under the description of waste management (identifying, accumulation, segregation, labeling and packaging, transporting and disposal) were drafted in a comprehensive manner and implemented in LMA network. The Bio-waste management policy and plan was included in the Biosafety Manual and relevant SOPs. It is essential for laboratory staff safety to have implemented effective hazardous waste management policy to reduce negative impact of hazardous waste on public health and environment.

ACKNOWLEDGEMENT

This study was funded by the U.S. Department of Defense (DoD), Defense Threat Reduction Agency (DTRA) under the Cooperative Biological Exchange Program (CBEP) projects

