



2V. Host Pathogen Interactions for Biosafety Professionals

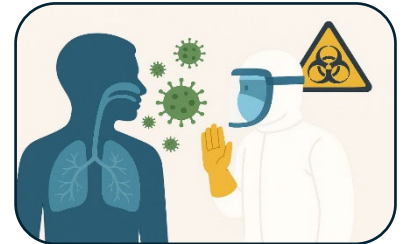
September 1 and September 3, 2026 | 11:00 am – 3:00 pm CDT
Virtual Professional Development Course

Instructors:

Daniel Eisenman, PhD, RBP(ABSA), CBSP(ABSA), SM(NRCM), Advarra, Columbia, MD
Nichole Tower, MS, Advarra, Columbia, MD

Overview

The course is intended to introduce biosafety professionals to host-pathogen interactions by focusing on fundamentals of immunology, microbiology and their interplay as they pertain to biosafety risk assessments utilizing instructional videos, case studies, established lab acquired infections and publications. Information from this course can assist biosafety professionals assess risks from microbiological research including potential effects of genetic modifications on virulence and infectivity of pathogens, susceptibility of hosts in in-vitro and in-vivo models for IBC review, assessing impact to the wellbeing of research animal hosts for IACUC review, as well as the occupational safety and occupational health of research personnel.



Objectives:

- Restate the fundamentals of microbiology and immunology as they pertain to host-pathogen interactions
- Identify how host-pathogen interactions affect risk assessments for maintaining the wellbeing of animal hosts
- Describe how host-pathogen interactions affect risk assessments for the safety of research personnel

Audience Level: Basic

Suggested Background: None

Who Should Attend: All Safety Professionals, Laboratory Workers, Animal Caretakers, Anyone involved in IBC, IACUC, occupational health or infection prevention and control

Course Logistics: Course is two 4-hour sessions. Attendees will need to log on 15 minutes prior to the start time. To receive credit and a certificate, attendees must attend the session and complete or access all course modules. The course materials are for **registered participants only**.

Course Fees: ***ABSA Member: \$550 Non-member: \$735**
* To receive the ABSA member rate, participants must be current ABSA members during the training year. Fees include course handouts, access to the ABSA International training site, and 8 hours of expert-led interactive instruction.

Credits: This course has been approved for **1.0 CM points** toward RBP/CBSP recertification. *ABSA International is approved as a provider of continuing education programs in clinical laboratory sciences by the ASCLS P.A.C.E.[®] Program. This course is approved for **7.5 P.A.C.E.[®] contact hours**. Course access links are unique and for individual use only. **Sharing is prohibited**. Duplicate logins or unregistered attendees will be removed from the webinar without a refund.

Questions: Contact: Kari DeServi, MEd, Director of Education, ABSA Office, 866.425.1385 (toll free)
Email: education@absa.org

Register: **By phone:** (866) 425-1385 or **Online:** www.absa.org
Confirmed, paid participants will be sent detailed information regarding the course within a few days prior to the course. Substitutions allowed with notice by 8/4/2026. There is a 15% processing fee for cancellations prior to 8/12/2026. No refunds after 8/12/2026.