



7V. We Built the BSL-3... Now What? Operational Management, Sustainability, and Risk-Based Decision Making for High-Containment Laboratories

November 19, 2026 | 11:00 am – 3:00 pm CST

Virtual Professional Development Course

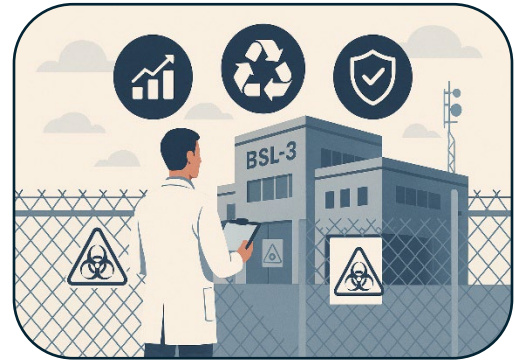
Instructors:

Luis Ochoa Carrera, MSc, Michigan State University, Lansing, MI

Claudio Mafra, DVM, MSc, PhD, Brazilian Society for Biosafety and Biosecurity (SB3), Vicosa, Brazil

Overview

High-containment laboratories play a critical role in public health preparedness, infectious disease research, and diagnostic response. However, constructing a Biosafety Level 3 (BSL-3) laboratory is only the first step; ensuring it is safe, sustainable, and compliant in operation presents significant technical, operational, and organizational challenges. Many institutions struggle with maintaining complex containment systems, implementing robust biosafety programs, and sustaining competent personnel and operational procedures over time. This course provides a practical framework for the operation, management, and sustainability of BSL-3 laboratories. Attendees will explore the operational components required to maintain high-containment facilities, including governance structures, risk management systems, operational procedures, infrastructure and engineering controls, preventive maintenance programs, and emergency preparedness strategies. Emphasis will be placed on integrating engineering controls, administrative controls, and biosafety practices into a coherent biorisk management approach aligned with international guidance and best practices. The course also examines common institutional challenges encountered in high-containment laboratories, including infrastructure failures, gaps in operational planning, insufficient maintenance strategies, and misalignment between laboratory design and operational capabilities. Attendees will learn how to evaluate these risks and implement practical solutions to improve laboratory performance and safety. Through case studies, operational examples, and scenario-based discussions, attendees will analyze real-world challenges related to the management of BSL-3 laboratories and explore strategies to strengthen institutional governance, improve operational resilience, and ensure sustainable laboratory performance.



Attendees will learn how to evaluate these risks and implement practical solutions to improve laboratory performance and safety. Through case studies, operational examples, and scenario-based discussions, attendees will analyze real-world challenges related to the management of BSL-3 laboratories and explore strategies to strengthen institutional governance, improve operational resilience, and ensure sustainable laboratory performance.

Objectives:

- Describe the operational structure and governance components required to safely manage and sustain a Biosafety Level 3 laboratory
- Evaluate infrastructure systems, operational procedures, and maintenance programs in BSL-3 facilities to identify potential operational risks and vulnerabilities
- Apply risk-based decision-making strategies to improve operational performance, incident response preparedness, and long-term sustainability of high-containment laboratories

Audience Level: Intermediate

Suggested Background: BSL-3 Operations and Management, Fundamentals of Biosafety, Risk Assessment

Who Should Attend: Experienced Biosafety Professionals, All Safety Professionals, Laboratory Workers

Course Logistics: Course is one 4-hour session with a 15-minute break. Attendees will need to log on 10 minutes prior to the start time. To receive credit and a certificate, attendees must attend the sessions and complete or access all course modules. The course materials are for **registered participants only**.

Course Fees: ***ABSA Member: \$330 Non-member: \$430**
* To receive the ABSA member rate, participants must be current ABSA members during the training year. Fees include course handouts, access to the ABSA International training site, and 8 hours of expert-led interactive instruction.

Credits: This course has been approved for **0.5 CM points** toward RBP/CBSP recertification. *ABSA International is approved as a provider of continuing education programs in clinical laboratory sciences by the ASCLS P.A.C.E.® Program. This course is approved for **3.5 P.A.C.E.® contact hours**. Course access links are unique and for individual use only. **Sharing is prohibited**. Duplicate logins or unregistered attendees will be removed from the webinar without a refund.

Questions: Contact: Kari DeServi, MEd, Director of Education, ABSA Office, 866.425.1385 (toll free)
Email: education@absa.org

Register: **By phone:** (866) 425-1385 or **Online:** www.absa.org
Confirmed, paid participants will be sent detailed information regarding the course within a few days prior to the course. Substitutions allowed with notice by 10/22/2026. There is a 15% processing fee for cancellations prior to 10/29/2026. No refunds after 10/29/2026.